

CL-L product information sheet

Product Specifications

Fits most: 32" - 45" flat panels

Supports up to: 125 lbs (56.7 kg)

Tilt: -5° to +15°

Mounting profile: 5.32" (135mm)

Maximum extension: 26.81" (681mm)

VESA Compliant: 100x100 to 200x200

Mounting: Double-stud

Warranty: 5 years

Color: Black and Platinum

Product Benefits

- Tilt, pan and swivel for maximum viewing flexibility
- Die-cast aluminum construction for maximum support in a lightweight mount
- I-beam arm design for added strength
- Innovative 4-link tilt mechanism for smooth, effortless movement
- Double-capacity cable management system guides wires
- Built-in screen leveling
- Lift n' Lock™ allows you to easily attach your flat panel to the mount
- Sliding lateral on-wall adjustment

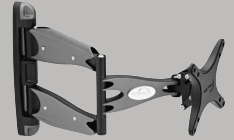


- Wall plate equipped with dual gang J-Box cutouts
- Locking system secures panel to mount
- Rotate for portrait or landscape orientation
- Installation template for simple and accurate mounting
- Includes complete hardware kit



A double-capacity cable management system is seamlessly integrated into the CL-L, allowing for twice as many cables to be neatly tucked away within the cantilever's housing

Series



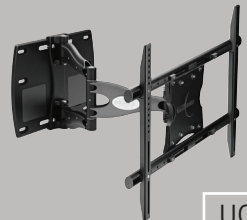
CL-S



CL-M



CL-L



UCL-L



UCL-X



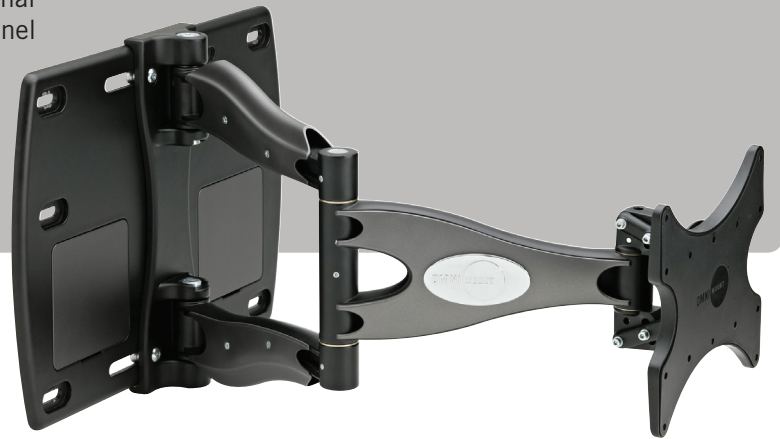
OmniMount, an innovator of A/V mounts and furniture for more than a quarter century, is the choice of professional installers and the brand most recommended by flat panel manufacturers. The popular Architectural Series is a full line of cantilever mounts with innovation, durability and maximum functionality built right in. The CL-L is ideal for anyone requiring a large heavy-duty cantilever mount with advanced features.



CL-L technical data sheet



OmniMount, an innovator of A/V mounts and furniture for more than a quarter century, is the choice of professional installers and the brand most recommended by flat panel manufacturers. The popular Architectural Series is a full line of cantilever mounts with innovation, durability and maximum functionality built right in. The CL-L is ideal for anyone requiring a large heavy-duty cantilever mount with advanced features.



Product Specifications

Fits most: 32" - 45" flat panels

Supports up to: 125 lbs (56.7 kg)

Tilt: -5° to +15°

Mounting profile: 5.32" (135mm)

Maximum extension: 26.81" (681mm)

VESA compliant: 100x100 to 200x200

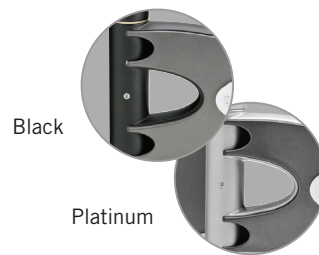
Mounting: Double-stud

Warranty: 5 years

Color: Black and Platinum

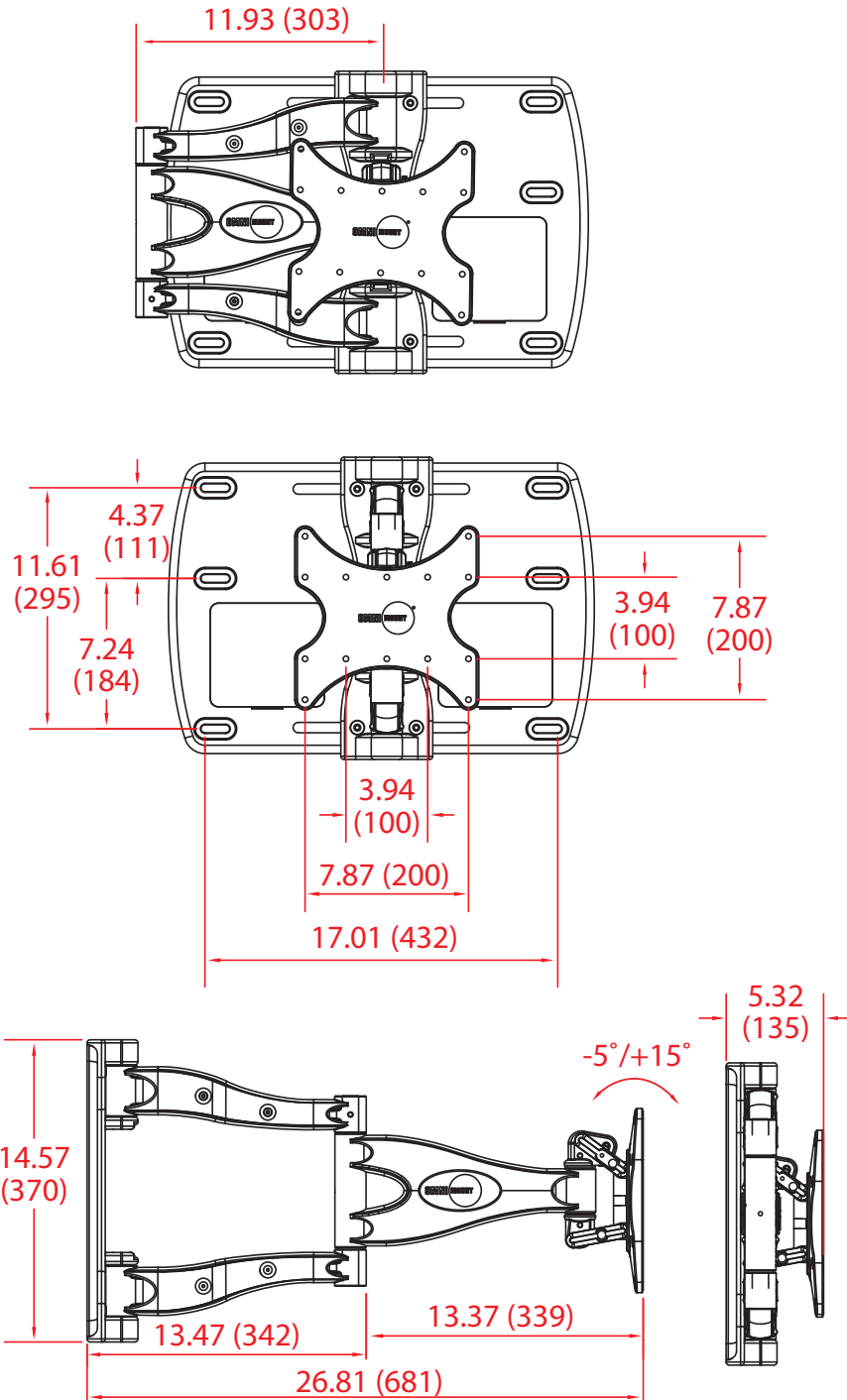
Product Benefits

- Tilt, pan and swivel for maximum viewing flexibility
- Die-cast aluminum construction for maximum support in a lightweight mount
- I-beam arm design for added strength
- Innovative 4-link tilt mechanism for smooth, effortless movement
- Double-capacity cable management system guides wires
- Built-in screen leveling
- Lift n' Lock™ allows you to easily attach your flat panel to the mount
- Sliding lateral on-wall adjustment
- Wall plate equipped with dual gang J-Box cutouts
- Locking system secures panel to mount
- Rotate for portrait or landscape orientation
- Installation template for simple and accurate mounting
- Includes complete hardware kit



	Color	Stock Code	Packaging UPC	MC UPC		Dimensions WxDxH Inches (mm)	Wt lbs (kg)
Americas	Platinum	1002472-1	758901014642	728901707865	Product Box	15.4 x 23.4 x 5.6 (391x594x141)	26.5 (12.0)
International	NA	NA	NA	NA	Master Carton	16 x 24.0 x 11.8 (406x610x300)	53 (24)
Americas	Black	1003075-1	728901014659	728901707872			
International	NA	NA	NA	NA			

Box Contents	Qty
Wall plate	1
VESA plate	1
Cantilever arm	1
Cable management cover	4
Complete mount installation hardware kit	1
Complete panel attachment hardware kit	1
Installation template	1
Instruction manual	1
Flat Panel Compatibility Chart	1



inches (mm)